

8. 附件

Add-on Pieces



附件表

Table of Add-on Pieces

标记 Identific Cation	附件 Add-on Piece		附图 Representation
00	无附件 / Without add-on Piece		
01	齿轮箱基座 Gear housing base	见第45页 see page 45	
70 1)	电机安装法兰 (输入端) Motor bell housing (input)	见第51-56页 see page 51-56	
71 1)	电机支架 (电动机, 联轴器) Motor bracket(motor, coupling)	见第49页 see page 49	
72	电机支架 Motor bracket	见第49页 see page 49	
73 1)	电机浮动底座 (电动机, 联轴器, 齿轮箱) Motor swing-base(motor, coupling, gear unit)	见第49页 see page 49	
74 1)	安装法兰 (输出端) Bell housing(output)	敬请垂询 On request	
75	(单侧)扭力臂 Torque reaction arm(on one side)	见第46页 see page 46	
76	(双侧)扭力臂 Torque reaction arm(on both side)	见第47页 see page 47	
77	扭力轴支撑 Torsion shaft support	见第48页 see page 48	
78	逆止器 (JRP2K../JRP3K..) Backstop (JRP2K../JRP3K..)	敬请垂询 On request	
79	特殊设计 Special design		

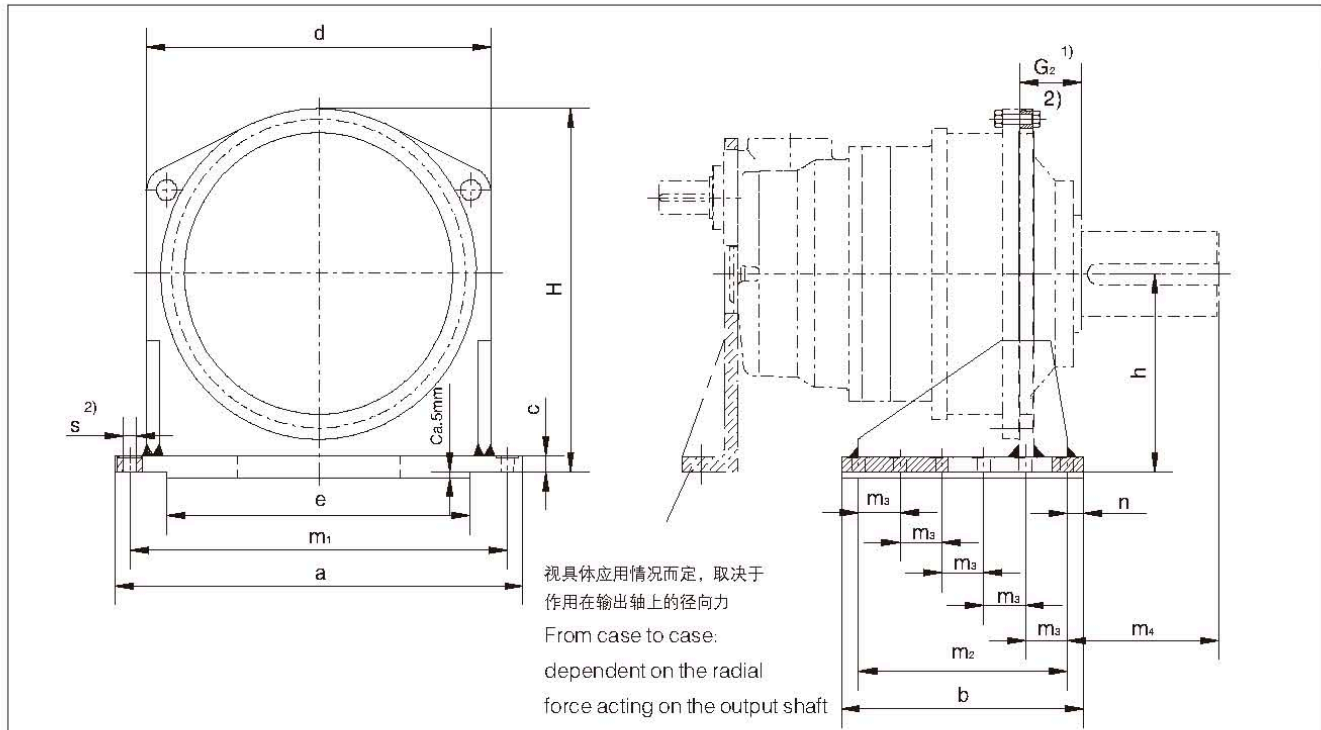
1)不能应用钢性联轴器

1)Not for rigid couplings



附件：齿轮箱底座

Add-on Piece: Gear Housing Base



尺寸 / Dimensions															
行星齿轮箱 Planetary gear unit 规格 Size	a mm	b mm	c mm	d mm	e mm	h mm	H mm	m ₁ mm	m ₂ mm	m ₃ mm	m ₄ mm	n mm	地脚螺栓 Foundation bolt		重量 Weight 约/ca. kg
													s ²⁾ mm	数量 No.	
9	580	330	20	450	380	260	480	520	260	130	240	35	26	2x3	56
10	630	360	25	500	430	280	525	570	290	145	240	35	26	2x3	82
11	680	400	30	550	480	315	585	620	330	110	274	35	26	2x4	122
12	760	450	30	630	560	360	670	700	380	95	292	35	26	2x5	157
13	820	490	35	680	610	390	720	750	420	105	334	35	26	2x5	213
14	920	560	35	760	680	430	800	840	480	120	380	40	33	2x5	270
16	980	580	40	820	700	470	865	900	500	125	374	40	33	2x5	350
17	1130	670	45	940	810	540	998	1040	580	145	405	45	39	2x5	520
18	1180	720	45	980	830	560	1035	1080	620	155	385	50	39	2x5	580
19	1260	760	50	1050	880	590	1090	1160	640	160	450	60	45	2x5	720
20	1260	760	50	1050	880	590	1090	1160	640	160	500	60	45	2x5	720
21	1440	840	55	1170	1020	660	1228	1320	700	175	513	70	52	2x5	940
22	1440	840	55	1170	1020	660	1228	1320	700	175	513	70	52	2x5	940
23	1540	910	60	1270	1100	730	1345	1420	750	150	567	80	52	2x6	1275
24	1540	910	60	1270	1100	730	1345	1420	750	150	607	80	52	2x6	1275
25	1700	1000	65	1400	1240	795	1465	1550	860	215	574	70	62	2x5	1670
26	1700	1000	65	1400	1240	795	1465	1550	860	215	634	70	62	2x5	1670
27	1850	1100	70	1550	1370	870	1610	1700	950	190	664	75	62	2x6	2170
28	1850	1100	70	1550	1370	870	1610	1700	950	190	724	75	62	2x6	2170
29	1980	1180	75	1640	1460	925	1715	1820	1000	250	731	90	70	2x5	2650
30	1980	1180	75	1640	1460	925	1715	1820	1000	250	771	90	70	2x5	2650
31	2150	1300	75	1750	1570	1000	1845	1950	1100	220	773	100	70	2x6	3100
32	2150	1300	75	1750	1570	1000	1845	1950	1100	220	833	100	70	2x6	3100
33	2230	1350	85	1850	1630	1050	1940	2050	1150	230	883	100	78	2x6	3850
34	2230	1350	85	1850	1630	1050	1940	2050	1150	230	933	100	78	2x6	3850
35+36	敬请垂询 / On request														

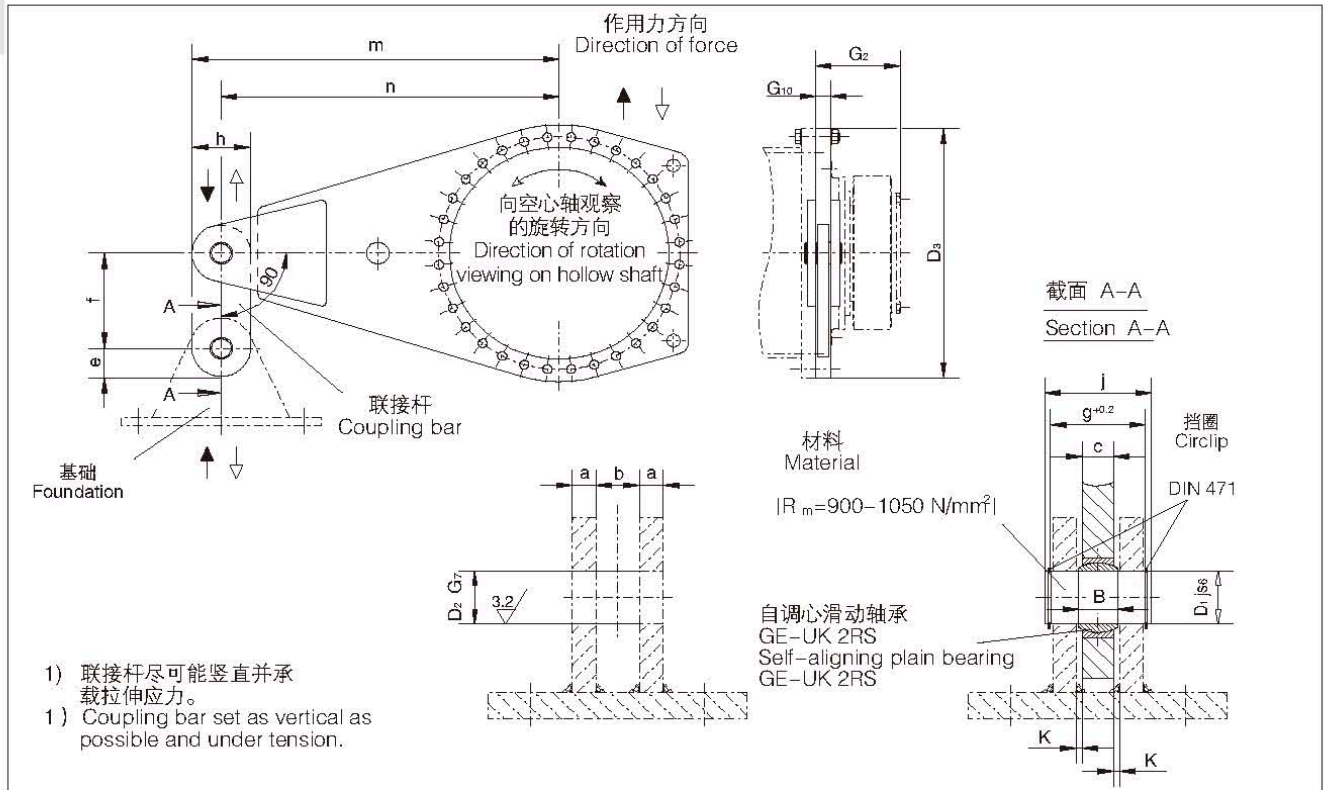
1) 输出轴尺寸见第42页。
2) 见第48页

1) For output shaft dimensions, see page 42
2) See page 48



附件：带联接杆的单侧扭力臂

Add-on Piece: Torque Arms on One Sides for Coupling Bar



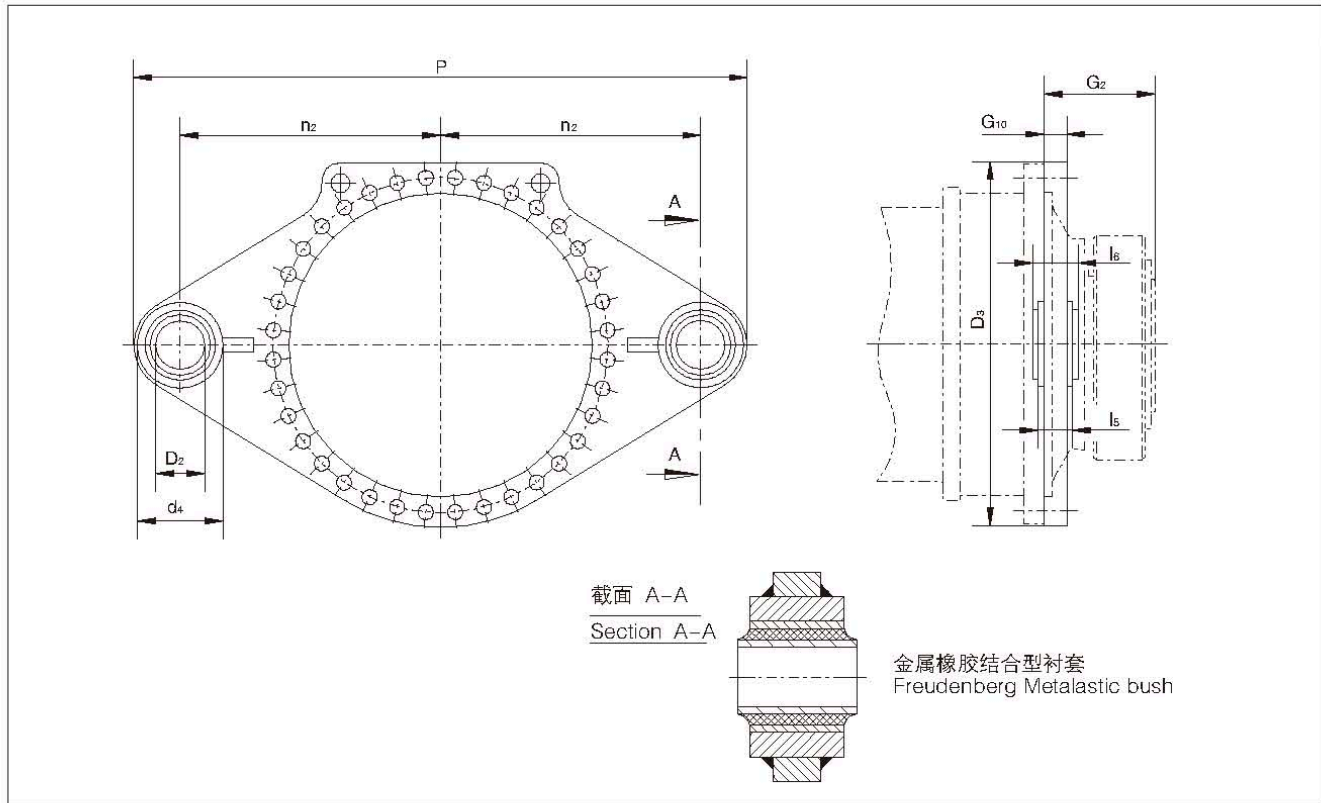
尺寸 / Dimensions																				
行星 齿轮箱 Planetary gear unit 规格 Size	额定输出 扭矩 Nominal Output Torques T _{2N} N.m	D ₁ js6	D ₂ G7	D ₃	G ₂	G ₁₀	a min.	b	B 2)	c	e	f	g +0.2	h	j	间隙 Clear- ance K	m	n	自调心 滑动轴承 Self-aligning plain bearing GE-UK-2RS	重量 Weight 约/ca. kg
mm																				
9	22000	30	440	165	25	15	25	22	18	50	140	59.5	100	70	3.5	605	555	30	38	
10	31000	35	485	174	30	15	30	25	20	52.5	140	64.5	105	75	5	667.5	615	35	51	
11	42000	40	540	204	30	18	30	28	22	65	160	70.5	130	85	4	750	685	40	82	
12	60000	40	620	224	30	18	30	28	22	65	160	70.5	130	85	4	850	785	40	85	
13	83000	45	665	241	35	20	35	32	25	72.5	180	79.5	145	95	5	912.5	840	45	113	
14	117000	50	740	278	40	20	40	35	30	72.5	200	85	145	100	5	1012.5	940	50	145	
16	160000	60	790	285	50	25	50	44	35	77.5	240	105	155	120	7.5	1077.5	1000	60	206	
17	202000	60	915	294	50	25	50	44	35	85	240	105	170	120	7.5	1250	1165	60	274	
18	244000	70	955	303	55	30	55	49	40	115	280	120	210	135	7.5	1315	1210	70	365	
19	295000	80	1005	327.5	60	30	60	55	45	115	320	125	210	145	7.5	1405	1300	80	423	
20	354000	80	1005	327.5	60	30	60	55	45	115	320	125	210	145	7.5	1405	1300	80	423	
21	392000	80	1140	354	60	30	60	55	45	113	320	125	225	145	7.5	1562.5	1450	80	530	
22	450000	80	1140	354	60	30	60	55	45	113	320	125	225	145	7.5	1562.5	1450	80	530	
23	513000	90	1235	380	65	30	65	60	50	125	360	130	250	150	7.5	1700	1575	90	665	
24	592000	90	1235	380	65	30	65	60	50	125	360	130	250	150	7.5	1700	1575	90	665	
25	684000	100	1350	407	75	35	75	70	55	138	400	150	275	170	10	1857.5	1720	100	940	
26	763000	100	1350	407	75	35	75	70	55	138	400	150	275	170	10	1857.5	1720	100	940	
27	852000	110	1490	453	75	35	75	70	55	150	440	150	300	175	10	2050	1900	110	1120	
28	950000	110	1490	453	75	35	75	70	55	150	440	150	300	175	10	2050	1900	110	1120	
29	1060000	110	1600	483	75	35	75	70	55	158	440	150	315	175	10	2192.5	2035	110	1260	
30	1200000	110	1600	483	75	35	75	70	55	158	440	150	315	175	10	2192.5	2035	110	1260	
31~36	敬请垂询 / On request																			

2) 公称尺寸 B=22-35 ⇒ 公差-0.12
 公称尺寸 B=44-55 ⇒ 公差-0.15
 公称尺寸 B=60-70 ⇒ 公差-0.20

2) Nominal size B=22-35 ⇒ tolerance-0.12
 Nominal size B=44-55 ⇒ tolerance-0.15
 Nominal size B=60-70 ⇒ tolerance-0.20

附件：带橡胶衬套的双侧扭力臂

Add-on Piece: Torque Arms on Two Sides with Rubber Bushes



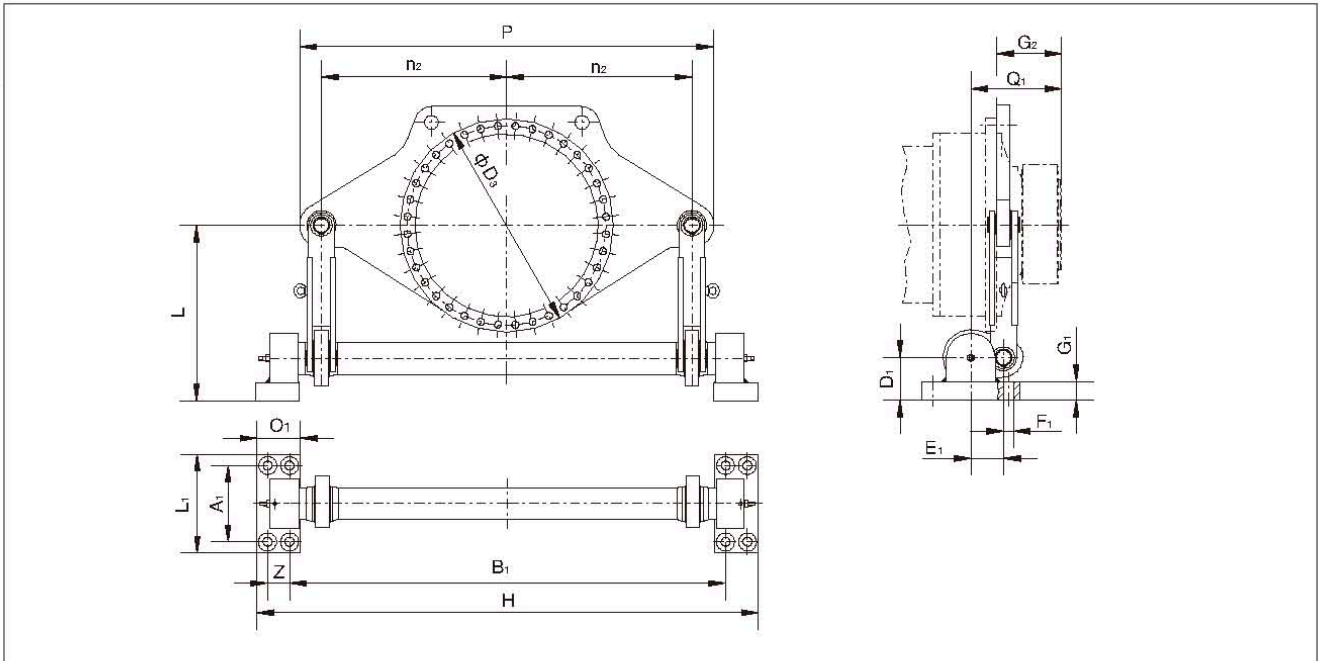
尺寸 / Dimensions												
行星 齿轮箱 Planetary gear unit 规格 Size	额定输出 扭矩 Nominal Output Torques T_{2N} N.m	D_2 1) $\phi H9$	D_3	d_4	G_2	G_{10}	l_5	l_6	n_2	P	重量 Weight 约/ca. kg	
					mm							
9	22000	50	440	115	165	30	100	110	500	1140	58	
10	31000	50	485	115	174	30	100	110	550	1240	72	
11	42000	100	540	180	204	30	110	120	575	1355	95	
12	60000	100	620	180	224	35	110	120	625	1455	120	
13	83000	110	665	210	241	35	170	180	600	1435	145	
14	117000	110	740	210	278	40	170	180	650	1535	170	
16	160000	124	790	240	285	40	220	230	700	1670	230	
17	202000	124	915	240	288	40	220	230	750	1770	300	
18	244000	124	955	240	303	50	220	230	900	2070	400	

1) 销轴: $\phi h8$

1) Pin: $\phi h8$

附件：扭力轴支撑

Add-on Piece: Torsion Shaft Support



尺寸 / Dimensions

行星 齿轮箱 Planetary gear unit 规格 Size	额定输出 扭矩 Nominal Output Torques T_{2N} Nm	A ₁	B ₁	D _s	D ₁	E ₁	F ₁	数量 2) No.	G ₁	G ₂	H	L	L ₁	n ₂	O ₁	P	Q ₁	Z	重量 约/ca. kg
		mm																	
9	22000	250	1320	610	120	105	33	8	48.5	165	1525	560	330	550	140	1230	247.5	65	325
10	31000	250	1320	610	120	105	33	8	48.5	174	1525	560	330	550	140	1230	256.5	65	325
11	42000	250	1320	610	120	105	33	8	48.5	204	1525	560	330	550	140	1230	286.5	65	325
12	60000	250	1320	610	120	105	33	8	48.5	224	1525	560	330	550	140	1230	306.5	65	325
13	83000	280	1547	775	155	145	39	8	68.5	241	1780	620	380	650	158	1450	358.5	75	620
14	117000	280	1547	775	155	145	39	8	68.5	278	1780	620	380	650	158	1450	395.5	75	620
16	160000	280	1547	775	155	145	39	8	68.5	285	1780	620	380	650	158	1450	402.5	75	620
17	202000	315	1777	955	170	165	39	8	73.5	294	2041	700	400	750	180	1680	431.5	84	900
18	244000	315	1777	955	170	165	39	8	73.5	303	2041	700	400	750	180	1680	440.5	84	900
19	295000	350	2000	985	195	175	45	8	83.5	328	2300	860	450	850	200	1900	470.5	100	1200
20	354000	350	2000	985	195	175	45	8	83.5	328	2300	860	450	850	200	1900	470.5	100	1200
21	392000	400	2254	1120	210	190	45	8	88.5	354	2591	900	530	950	225	2110	506.5	113	1500
22	450000	400	2254	1120	210	190	45	8	88.5	354	2591	900	530	950	225	2110	506.5	113	1500
23	513000	450	2496	1215	235	220	45	8	98.5	380	2871	1060	590	1063	250	2385	562.5	125	2150
24	592000	450	2496	1215	235	220	45	8	98.5	380	2871	1060	590	1063	250	2385	562.5	125	2150
25	684000	500	2816	1350	275	245	52	8	118.5	407	3236	1200	650	1150	280	2600	614.5	140	2650
26	763000	500	2816	1350	275	245	52	8	118.5	407	3236	1200	650	1150	280	2600	614.5	140	2650
27	852000	530	2887	1490	300	255	52	8	128.5	453	3327	1250	700	1250	290	2820	670.5	150	3250
28	950000	530	2887	1490	300	255	52	8	128.5	453	3327	1250	700	1250	290	2820	670.5	150	3250
29	1060000	560	3200	1565	300	280	62	8	128.5	483	3673	1350	750	1360	315	3080	718	158	3900
30	1200000	560	3200	1565	300	280	62	8	128.5	483	3673	1350	750	1360	315	3080	718	158	3900
31	1330000	590	3408	1695	340	300	70	8	148.5	538	3906	1400	790	1450	330	3260	788	168	5050
32	1500000	590	3408	1695	340	300	70	8	148.5	538	3906	1400	790	1450	330	3260	788	168	5050
33	1680000	620	3588	1785	375	320	70	8	158.5	573	4116	1500	840	1550	350	3520	840.5	178	6800
34	1920000	620	3588	1785	375	320	70	8	158.5	573	4116	1500	840	1550	350	3520	840.5	178	6800
35+36																			

- 1) 标准尺寸，最高可至2000mm。
2) 螺栓强度为6.8级，按照标准DIN898。

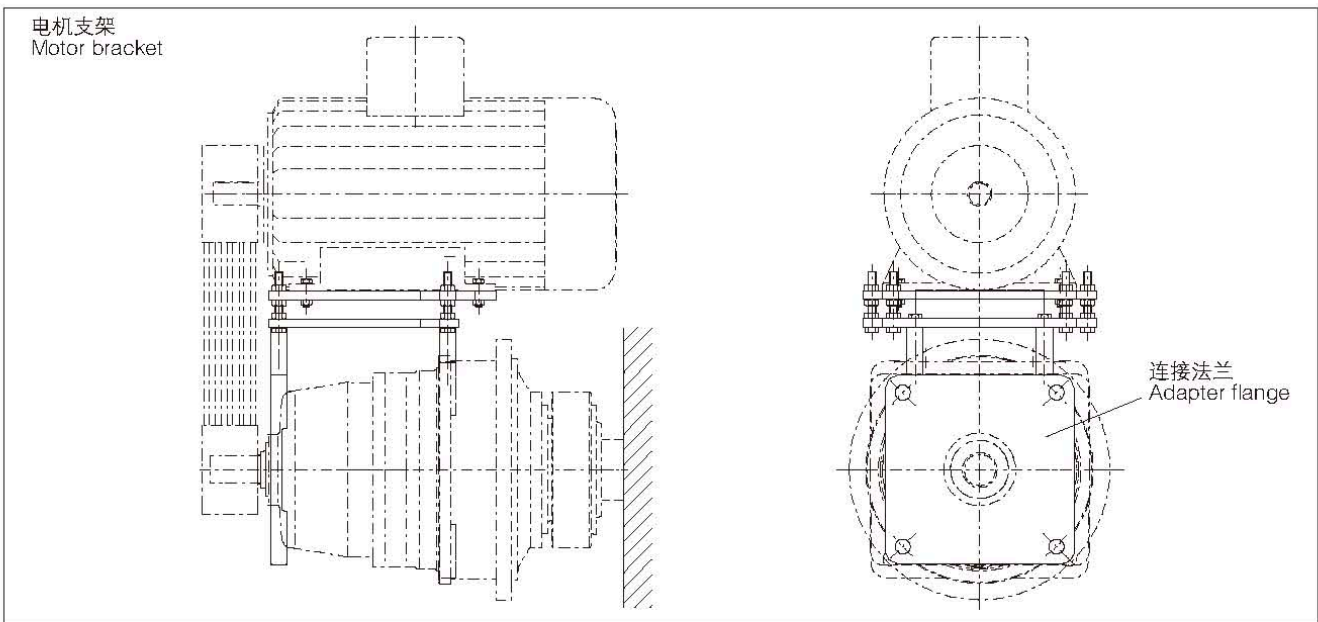
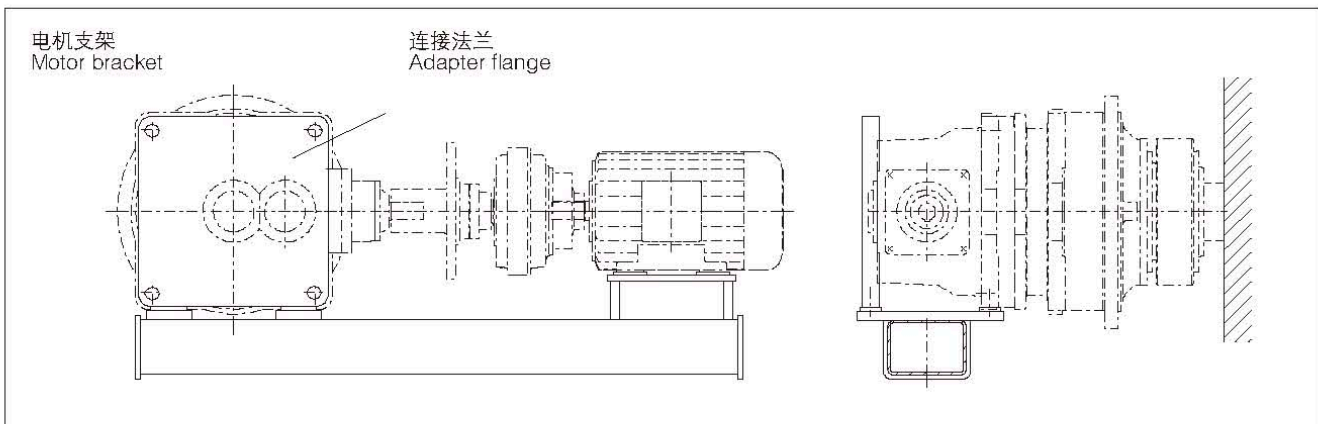
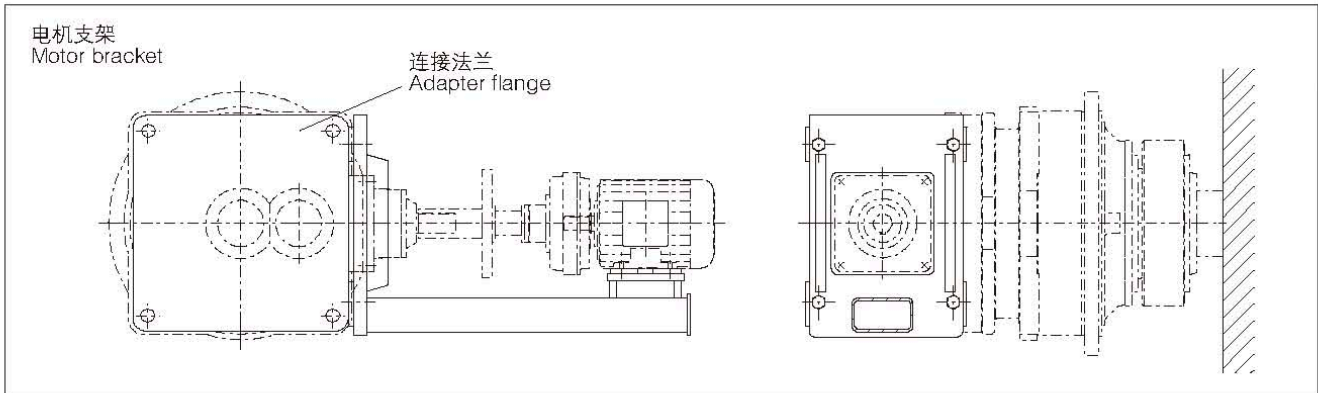
- 1) Standard dimension, overall height modifiable up to 2000 mm.
2) Use bolts of property class 6.8 acc. to DIN 898.

在标准设计型式，即DSD型中采用无需维护保养的、在轴承中内置密封装置的自调心滑动轴承。
在特殊要求及特殊环境条件下，自调心滑动轴承可以通过附加的密封装置加以保护，在这种情况下应采用设计型式DDA。

With the standard design, type DSD, maintenance-free self-aligning plain bearings with integrated seal are used. Where there are special requirements or special ambient conditions, the self-aligning plain bearings can be protected with an additional seal. In this case, the DDA design is required.

附件：电机支架

Add-on Piece: Motor Bracket



在不能采用电机安装法兰的场合，我们使用一个连接法兰与电机支架固定。

标准箱体及其中间法兰是专门为了连接之用而准备的，并且是根据订单要求加工的。

支架连接型式及结构如上图所示。对于每一种不同类型和规格的齿轮箱，所允许使用的电机规格需与设计部门进行确认。

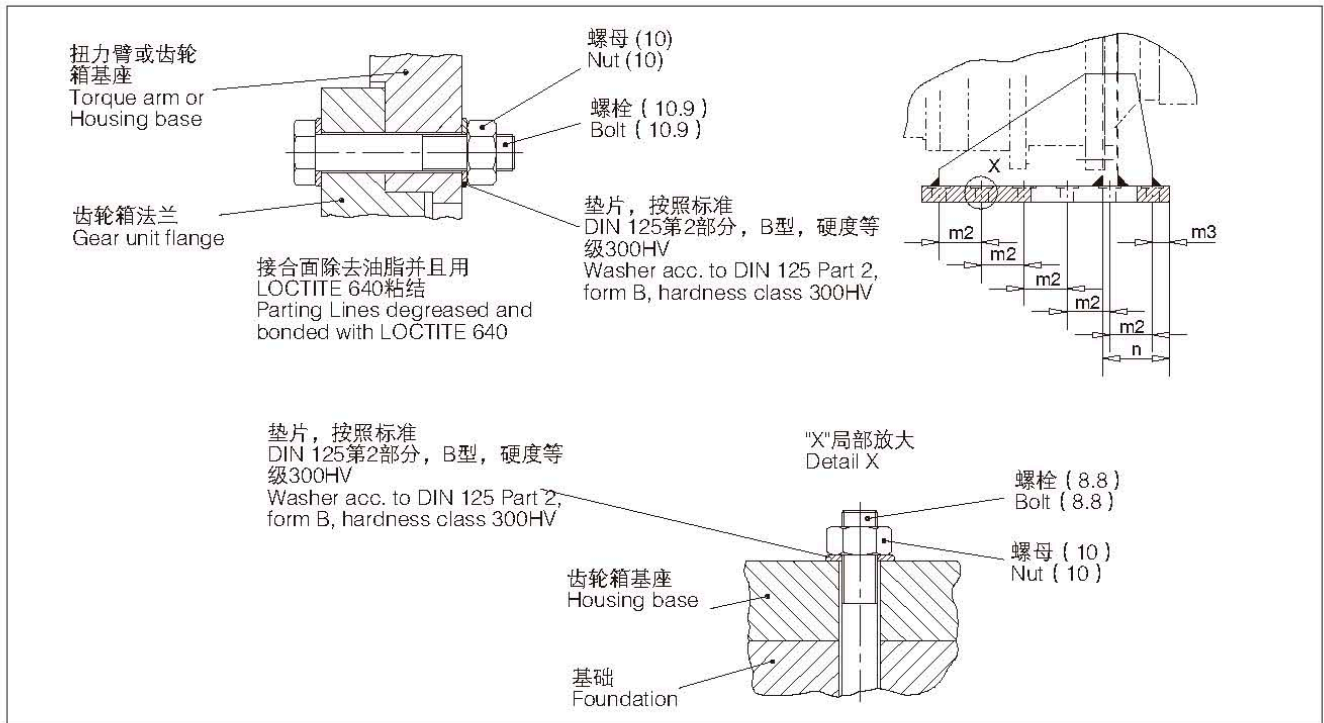
In cases where no motor bell housings are provided we use an adapter flange to attach motor brackets.

The standard housings and intermediate flanges are specially prepared for attachment and are machined to order specifications.

Examples of the type and design of bracket attachment are shown in the above drawings. The permissible motor size for each gear unit size and design is to be agreed upon from case to case with the design department.

法兰连接和地脚安装的紧固力矩

Tightening Torques for Flange Connections and Foot – mounted Design



尺寸 / Dimensions

齿轮箱规格 Gear unit size	法兰连接 Flange attachment		地脚连接 ¹⁾ Base attachment	
	螺纹强度等级 (10.9) Thread Strength class(10.9)	紧固力矩 ²⁾ Tightening torque Nm	螺纹强度等级 (8.8) Thread Strength class(8.8)	紧固力矩 ²⁾ Tightening torque Nm
9	M16	295	M24	710
10	M16	295	M24	710
11	M20	580	M24	710
12	M24	1000	M24	710
13	M24	1000	M24	710
14	M24	1000	M30	1450
16	M24	1000	M30	1450
17	M30	2000	M36	2530
18	M30	2000	M36	2530
19/20	M30	2000	M42	4070
21/22	M36	3560	M48	6140
23/24	M36	3560	M48	6140
25/26	M42	5720	M56	9840
27/28	M48	8640	M56	9840
29/30	M48	8640	M64	14300
31/32	M56	13850	M64	14300
33/34	M56	13850	M64	14300
35/36	M56	13850	M72	20800

1) 用户需检查联接螺栓以确保其与基础上的联接孔相匹配。

1) The bolts must be checked by the user to ensure that they are suitable for the foundation design.

2) 紧固力矩是指当螺纹摩擦系数为0.14, 达到螺栓90%屈服极限时的力矩值。

2) Tightening torques relate to friction values 0.14 in the thread and 90% utilization of yield point.