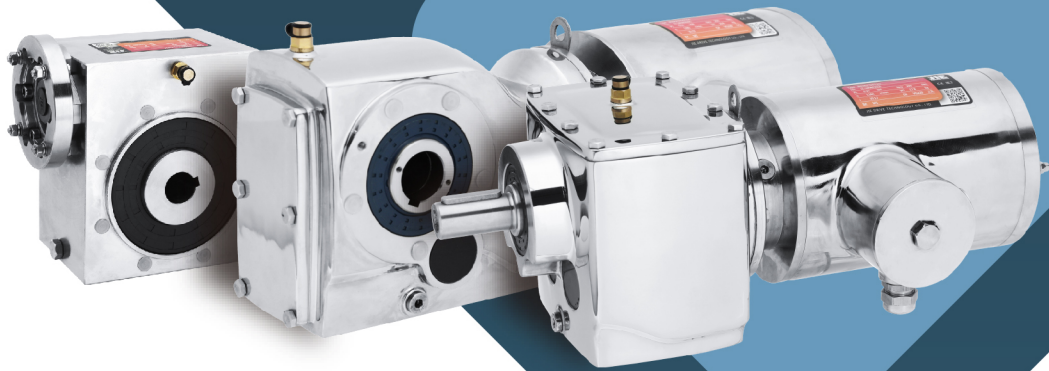


JIE
JD DRIVE

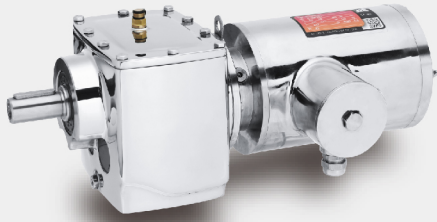


JRES
Stainless Steel
Gearmotor

IP69K

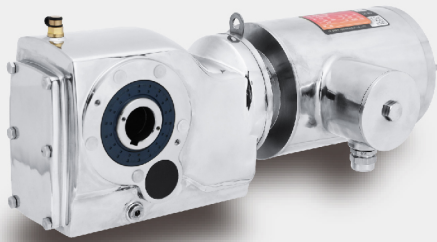
JRES Stainless Steel Gearmotor

IEC / NEMA / SERVO Adapters Available



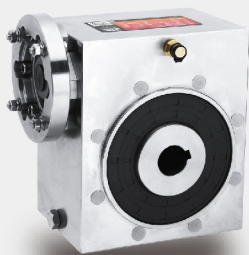
JRESR Stainless Steel Helical Inline Gearmotor

Size: 37-67
Ratio: 3.41-199.81
Input power: 0.25-10HP
Output torque: 230-5930 lb-in



JRESK Stainless Steel Helical-Bevel Gearmotor

Size: 37-67
Ratio: 3.98-145.14
Input power: 0.25-7.5HP
Output torque: 106-8055 lb-in



JRESSD Stainless Steel Worm Gear Unit

Size: 40-63
Ratio: 7.5-100
Input power: 0.12-5.3HP
Output torque: 168-4053 lb-in

